

Part Manufacturing Planner

Providing the right people with the right data to improve the part manufacturing planning process

fact sheet

www.ugsplm.com

► Summary

The Part Manufacturing Planner provides a managed environment with built-in applications for creating outline process plans, managing and associating tools, and creating flexible reports targeted at part manufacture. This application links the tasks of the manufacturing engineer, NC programmer, tool designer and tooling manager, while extending access to the shop floor. It features the ability to create operations in both a hierarchical structure and a process sequence using graphical editing and displays. The key to the Part Manufacturing Planner is that it provides controlled access to the right part manufacturing data, at the right time for the right people.

Features and benefits

Saves time in the planning of piece-part manufacturing, reduces the costs of errors and improves quality

Provides faster access to the right data in a common information platform

Can be accessible from key manufacturing applications such as NX CAM

Leverages 3D product data to support part manufacturing planning

Enables re-use of tooling and fixtures

Captures and classifies best practices for re-use in later jobs

Provides the ability to embed quality checks throughout

Enables the use of automated routines for reporting, change control, workflow

Vaulting and management of all manufacturing related data, files and documentation

Manages ptp, shop doc, clsf and template files through tight integration with NX CAM

Integrates fully with Resource Manager for tooling, fixtures, machines, templates and standard operations

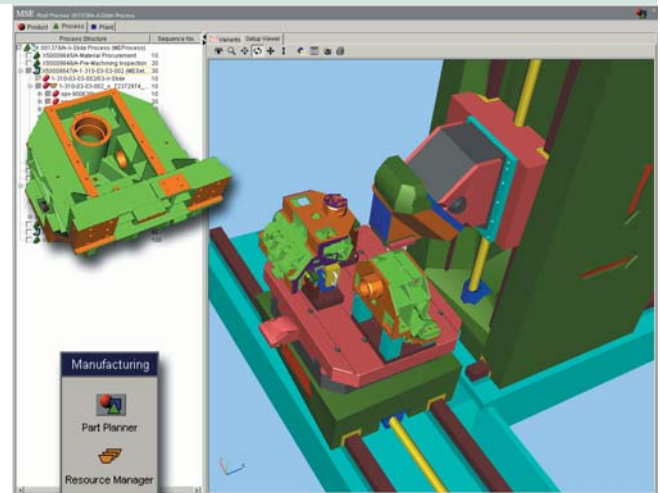
Part Manufacturing Planner's business value

The Part Manufacturing Planner is a key element of the E-factory Part Manufacturing solution. The complete solution includes the Resource Manager, NX for fixture design and NX CAM. This solution saves the manufacturing engineer, NC programmer and tooling professional time, reduces the costs of errors and improves quality throughout the entire manufacturing process.

The Part Manufacturing Planner allows users access to process data for re-use, editing or review from a central source. With the faster access to the right data from a common information platform, users improve communication and reduce time and errors in the piece-part manufacturing planning process. With the integration of automated routines and quality checks embedded throughout the entire process definition, product quality also increases. The use of automated routines for reporting, change control, and workflow are also instrumental in supporting manufacturing engineers.

The Part Manufacturing Planner advantage

As a Teamcenter® application, the Part Manufacturing Planner provides a common platform and a single source where all the players in the manufacturing organization can go to find information, communicate with each other, and collaborate on the part manufacturing planning process. Users gain access to a central repository with a defined information structure, storing and managing CAM data elements such as setup templates, CLS files, postprocessor output files and shop floor documentation. These elements are attached to the appropriate process and activity steps within Teamcenter Manufacturing.



System requirements

The Part Manufacturing Planner runs on a wide variety of hardware platforms and configurations including Windows Intel (32-bit) XP, Hewlett Packard HP-UX, IBM, AIX, Sun Solaris.

Using the Part Manufacturing Planner

By providing a structured repository for all part manufacturing product and process data, the Part Manufacturing Planner brings together all the important players in the part fabrication process. This leads to a number of key benefits:

- Fast, easy and effective access to the correct process data saves time and reduces errors.
- Proven methods can be captured and reused resulting in higher levels of productivity, improved process repeatability and quality.
- Standard tooling and fixtures can be selected from a common shared library encouraging the use of approved resources and improving utilization of existing assets.

In addition to improving the overall part fabrication planning process, Part Manufacturing Planner also makes the jobs of everyone involved in the planning activity easier:

- *Manufacturing engineers* can create outline part manufacturing process plans and stored proven process methods as best-practice templates for later re-use in similar jobs
- *Tooling professionals* can manage tooling and fixtures in a central library, assign them to operations or cells, and even create simple assembly operations
- *NC programmers* can leverage a process-based environment for the management of NC programming data, eliminating the need for user file management in personal directories on local PC discs. Data created by NX CAM can be automatically managed in the context of machining operations.



Contact

UGS PLM Solutions

Americas 800 498 5351
Europe 44 1276 705170
Asia-Pacific 852 2230 3333

www.ugsplm.com

